



# 79%

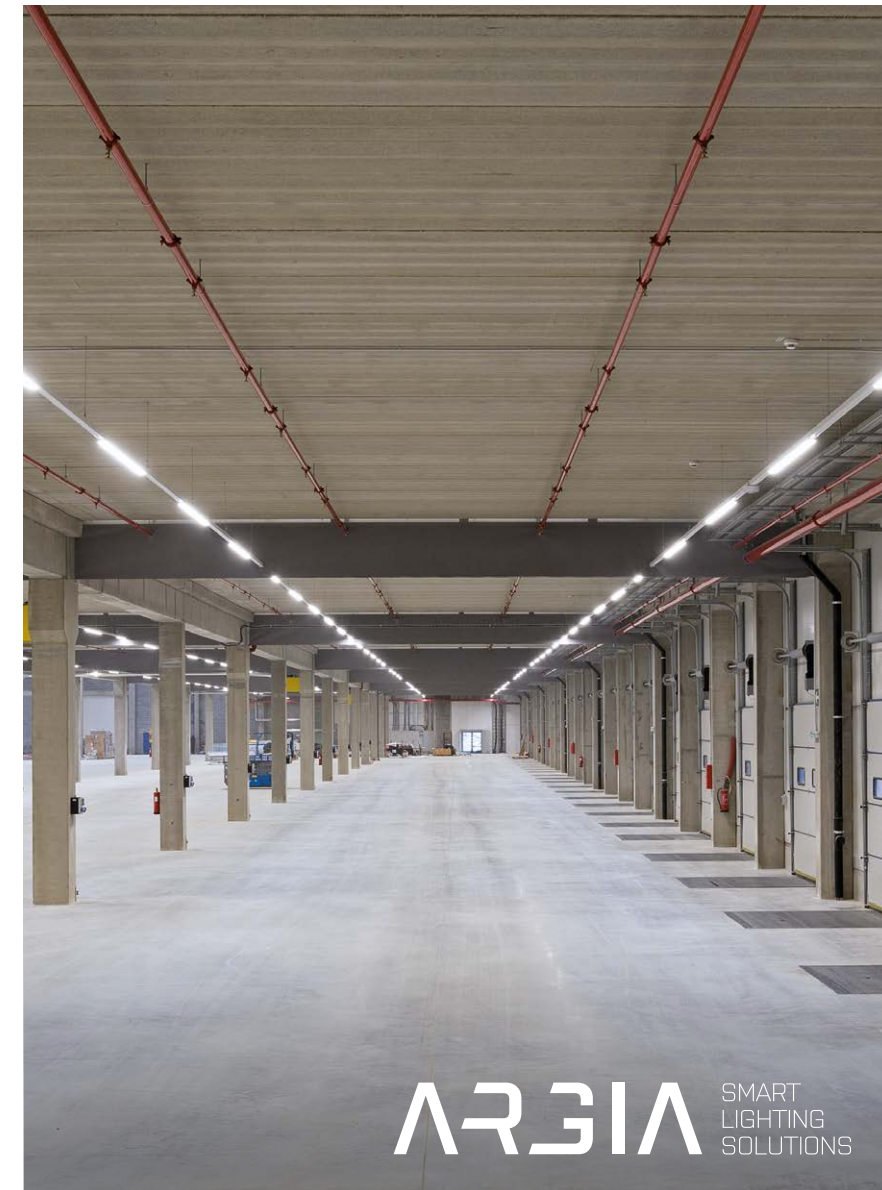
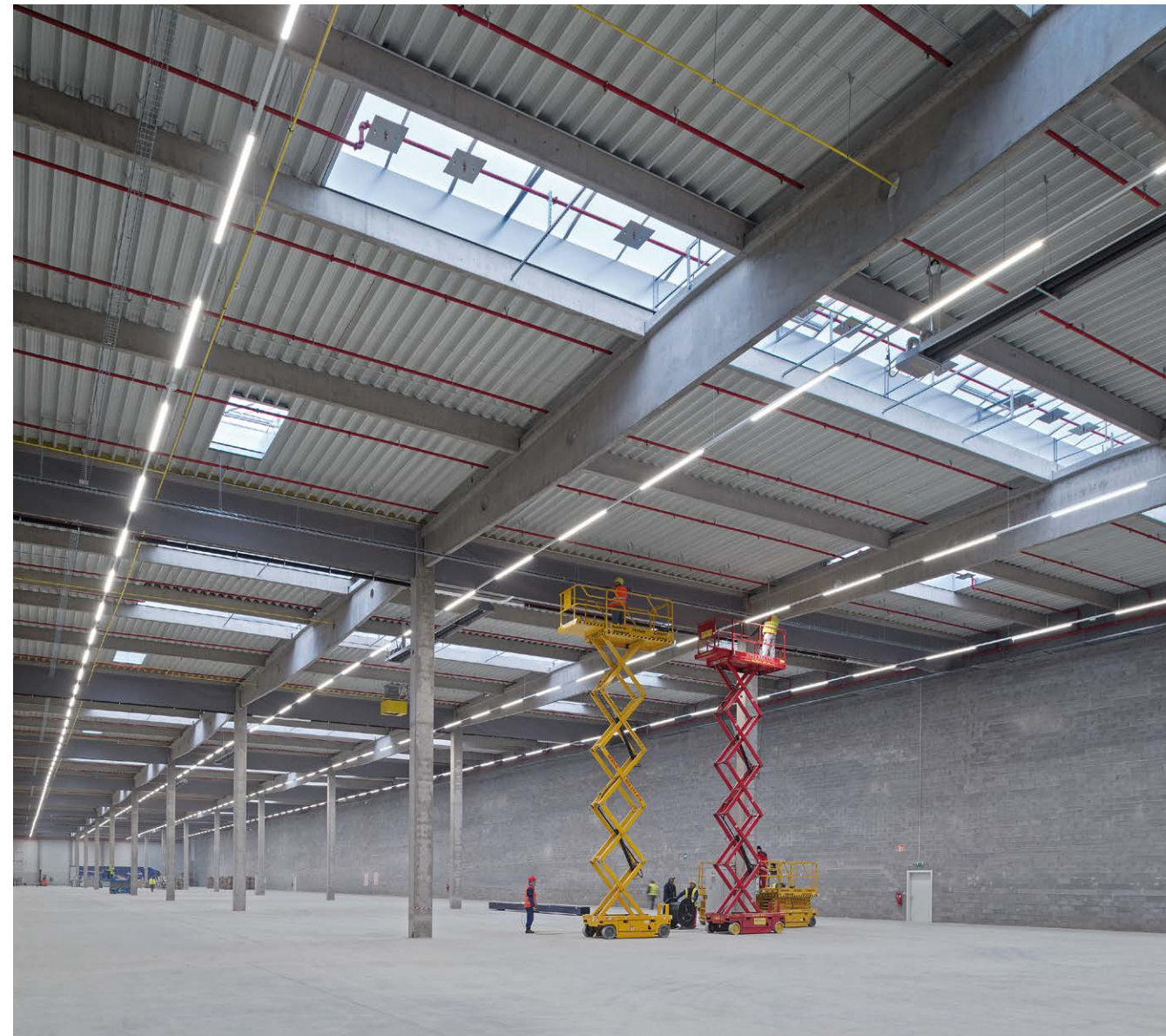
## TCHIBO, CHEB, CZ

For two new industry halls with area almost 75,000 m<sup>2</sup>, investor ACCOLADE, areal PANATTONI PARK CHEB, we delivered and install complete artificial and emergency lighting of storage and production halls. Artificial lighting is realized by LED row-system and is controlled via DALI system according to Daylight. Installation took place in two separate phases. The combination of LED luminaires and DALI control brings the

customer extra-standard energy savings of 79% and control comfort. Everything was delivered on time and fully complies with applicable standards. The tenant of both halls is company TCHIBO.

	Original installation	<b>ARGIA lighting solution</b>
<b>Type of luminary</b>	Fluorescent lamps T5	<b>Zumtobel TECTON LED DALI</b>
<b>Number of luminaires</b>	3,670 units	<b>2,440 units</b>
<b>Total Input</b>	598.08 kW	<b>168.76 kW</b>
<b>Consumption kWh/year</b>	2,966,482 kWh	<b>627,769 kWh</b>

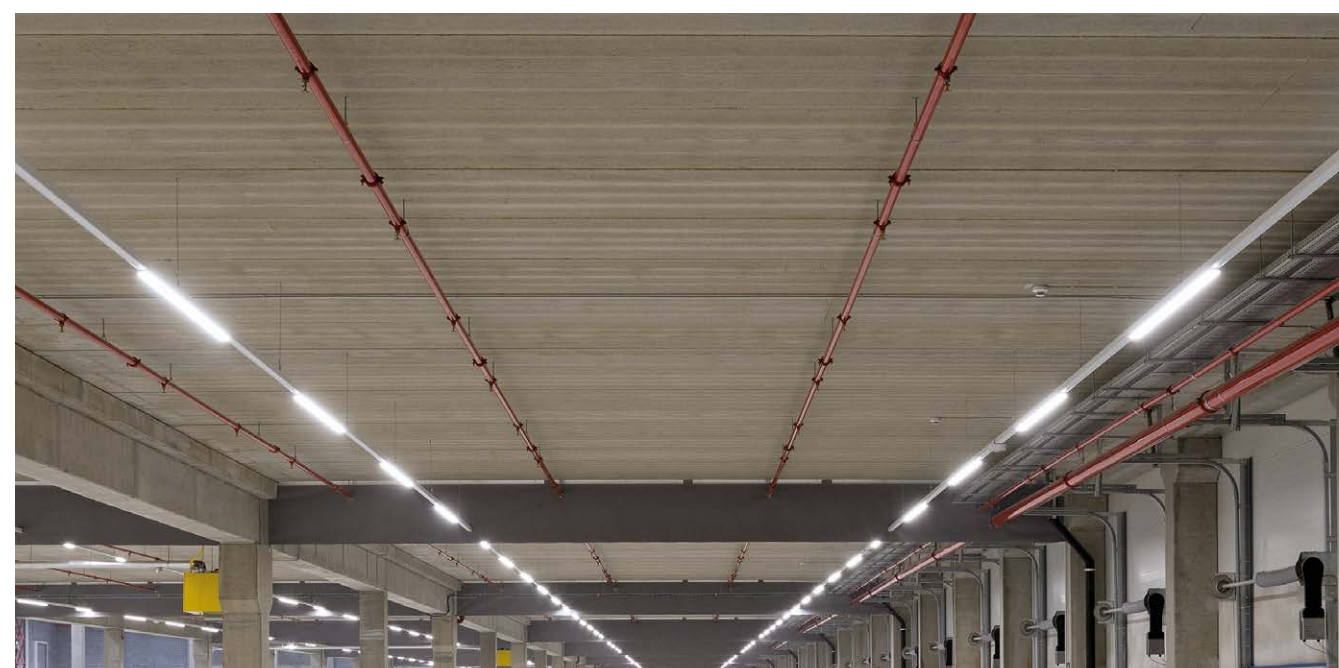
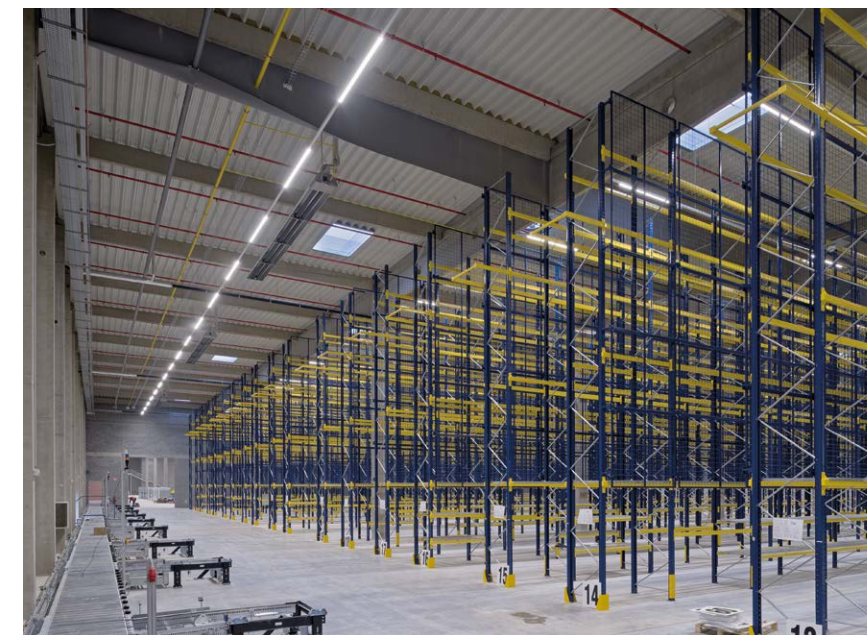
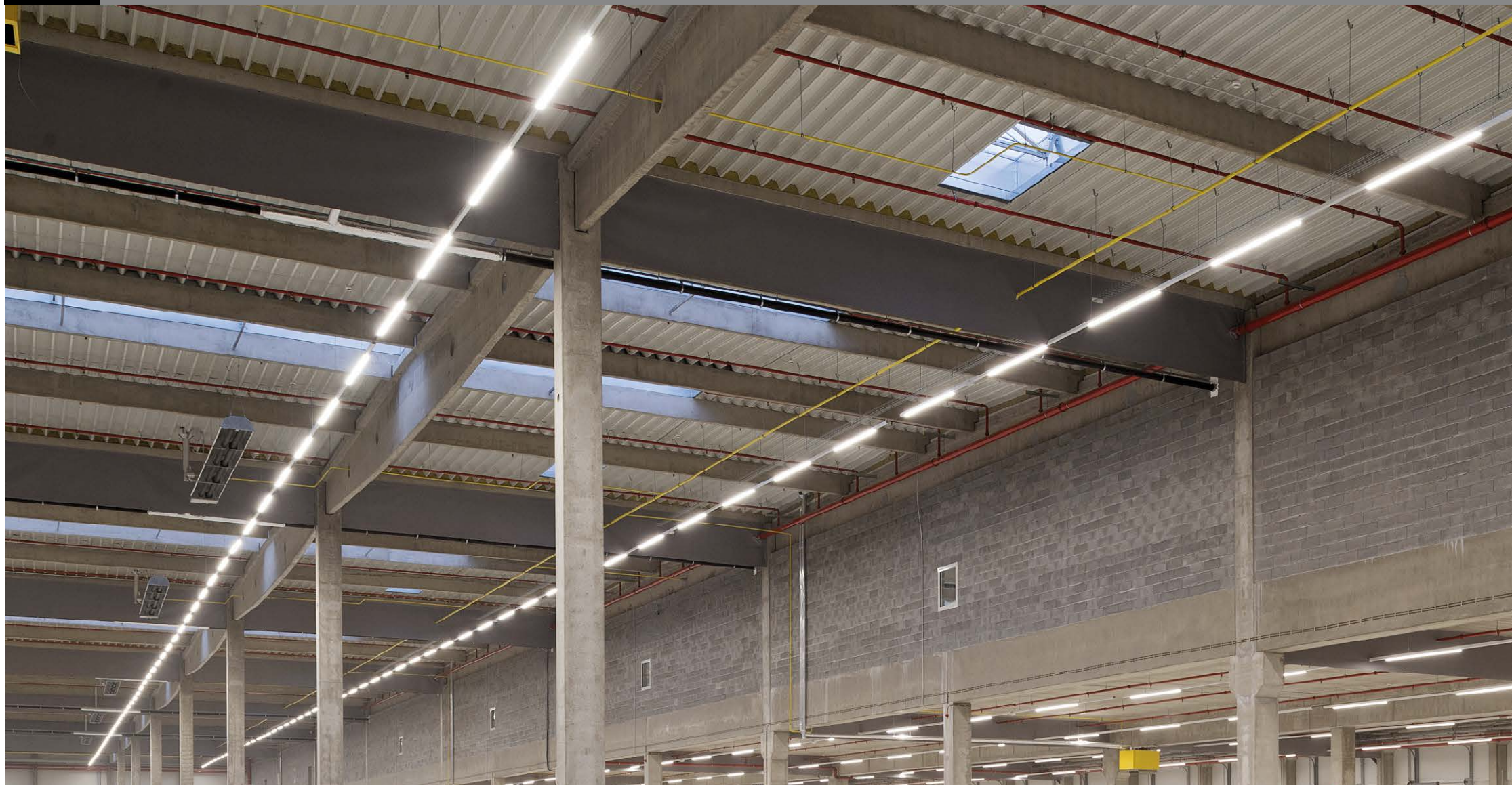
Total operating costs reduced by 79%.





INDUSTRIAL LIGHTING  
TCHIBO, CHEB, CZ

[www.argia.com.mx](http://www.argia.com.mx)



**ARGIA** SMART  
LIGHTING  
SOLUTIONS